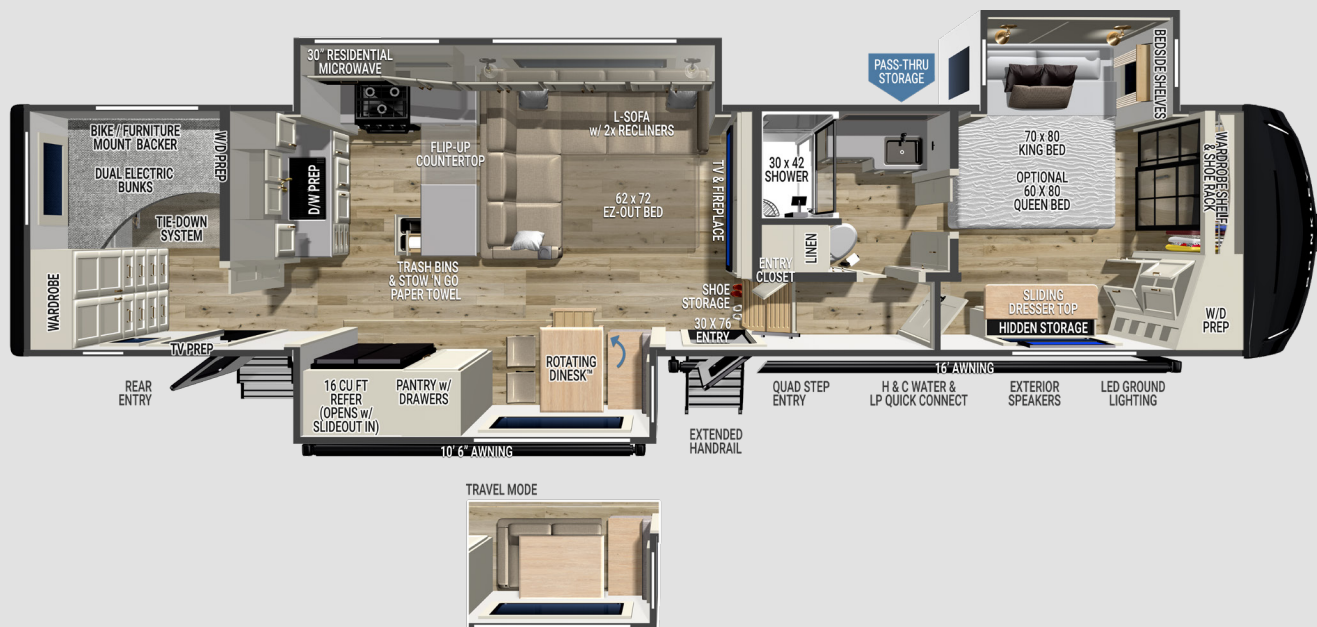


MODEL Z 3510

Standard Run **MSRP \$143,003**

SPECIFICATIONS

- UVW: 14,815 lbs.
- GVWR: 17,995 lbs.
- Hitch Weight: 2,695 lbs.
- Exterior Length: 41' 6"
- Overall Height w/ A/C: 13' 5"
- Width: 96"
- Interior Height: 79.5"
- Slide Height: 76"
- Axles: Tandem 8,000 lbs.
- Wheels & Tires: 17.5" H-Rated (16-Ply)
- Fresh Water Capacity: 75 gal.
- Gray Water Capacity: 128 gal. (88 True + 40)
- Black Water Capacity: 44 gal.
- Insulation: Floors/Ceiling R40, Walls R11

FEATURES

- 65" Smart TV
- L-Sofa w/ 2x Recliners & EZ-Out Bed (62" x 72")
- Rotating Dinesk™: Floating Table/Desk w/ Drawer (Seats 4)
- Waterfall Island Flip-Up Countertop
- 80" Pantry w/ Pull-Out Drawers & Appliance Outlet
- Pet Feeder w/ Removable Pet Bowls
- Premium Residential Cabinets & Drawers w/ Dovetail Joints
- Brinkley CraftSense™ Wood Trim Construction
- Kitchen & Living Room/Dining Room Flush Floor Slides
- 2x Furrion 18k Chill Cube A/Cs w/ Heat Pumps (Ducted to Bedroom, Bath, & Bunk Room)
- Bedside Shelves & Outlets w/ USB & USB-C
- Rockford Fosgate Stereo w/ App Control
- Square Euro Frameless Dual Pane Windows w/ Up To 6" Openings
- Integrated Window Screens & Insulated Blackout Blinds (No Valances)
- Brinkley Automotive-Grade Sealant Package
- Automotive-Grade Front Cap, Lights, & Lenses
- Sleek & Clean Styling w/ Automotive-Grade Exterior Graphics
- Full-Height Vertical Brake/Turn Light Strips
- Tip-To-Clean Quad Entry Steps
- Over 130 cu. ft. of Exterior Storage w/ Tough Ply Liner
- Basement Utility Access w/ Motion Lights
- Built-in Wire Conduit from Roof to Basement
- 2x Hot/Cold Outdoor Showers
- 2x Hot/Cold Outdoor Showers (BOTH Sides of Coach)
- Industry First Brass Plumbing Connections
- Industry First Low Maintenance Roof
- Electric Waste Valves w/ Indicator Light & Manual-Override
- Brinkley Platinum Smart-Command™ Center w/ Touch Screen, App Control, & 1-Touch Awning Control
- Brinkley On-Command™ Docking & Utility Center w/ Retractable 65' Water Hose
- 370W Solar Panel w/ 50-Amp MPPT Controller (Inverter Prep & Lithium Ready)
- One Touch Automatic 4-Point Leveling System
- CURT Touring Coil Suspension System w/ Anti-Lock Braking System (ABS), Anti-Sway, & Dynamic Brake Boost
- CURT Helux™ King Pin w/ Coil Spring & Shock-Absorber

BUNK ROOM HIGHLIGHTS

- Dual Electric Bunks (71"x51")
- Floor-To-Ceiling Wardrobe
- 8k A/C & TV Prep
- Washer/Dryer Prep
- Cargo Tie-Down System & Bike Rack Prep

FACTORY OPTIONS

- Queen Bed w/ Nightstands \$428
- Gen-Y® Executive Gooseneck w/ SnapLatch Torsion Flex \$1,876
- Premium Exterior Pkg. w/ Full Body Paint (Silver, White, or Gold) \$24,000
- Recliners In Place of EZ-Out Bed \$362



For More Information, Photos, Videos, & Why Brinkley go to [BrinkleyRV.com](https://www.brinkleyrv.com)